

Thank You For Your Interest In



**8900 Fisherman's Point Dr.
Temple Terrace, Florida 33637**

Phone: 813-989-0586

Fax : 813-988-5581

fishermans@resimgt.com

www.FishermansLandingApts.com





Inspired By the Setting... Captured by the Service!

Our one, two and three bedroom apartment homes are beautifully enhanced by lush tropical landscaping that adorns our community. The enormous screened patio/balconies that accompany all of our apartment homes allow you to further enjoy the tranquil nature setting.

With our five floorplans to choose from, there is a home to suit everyone's needs. Whether you enjoy an upper level home with cathedral ceilings or a nice wood burning fireplace, we can accommodate your needs.

There's plenty of neighborly fun and relaxation at the clubhouse, Swimming Pool/Whirlpool and Fitness Center. You'll also find lighted tennis courts, and much more. Enjoy yourself knowing that our professionally trained management and service teams are looking after it all for you.

We think you'll agree Fisherman's Landing is the apartment home you've been looking for.

We are conveniently located to Interstate 75, minutes from University of South Florida, Florida Hospital, Lettuce Lake Park and within walking distance from Temple Terrace Rotary Park and Boat Ramp as well as many more nearby conveniences

Apartment Features

- 1, 2 & 3 Bedroom Apartment Homes
- Washer/Dryer Connections
- Pantry in Kitchen
- Dishwasher & Disposal
- Wood Burning Fireplace *
- Cathedral Ceilings *
- Ceiling Fan in living area
- Frost-Free Refrigerator with Ice Maker *
- Bookshelves in living & dining area
- Walk-in Closets
- Private Screened Balconies and Patios
- Outside Storage *

**in select apartments*

Community Privileges

- Beautiful Clubhouse
- Swimming Pool
- Tot Lot
- Hillsborough River Access
- Car Wash Area with Vacuum
- Scenic Pond
- Fitness Center
- Canoe and Boat Storage
- Clothes Care Center
- Lighted Tennis Court
- Pet Friendly (*some restrictions apply*)

8900 Fisherman's Point Dr. • Temple Terrace, Florida 33637

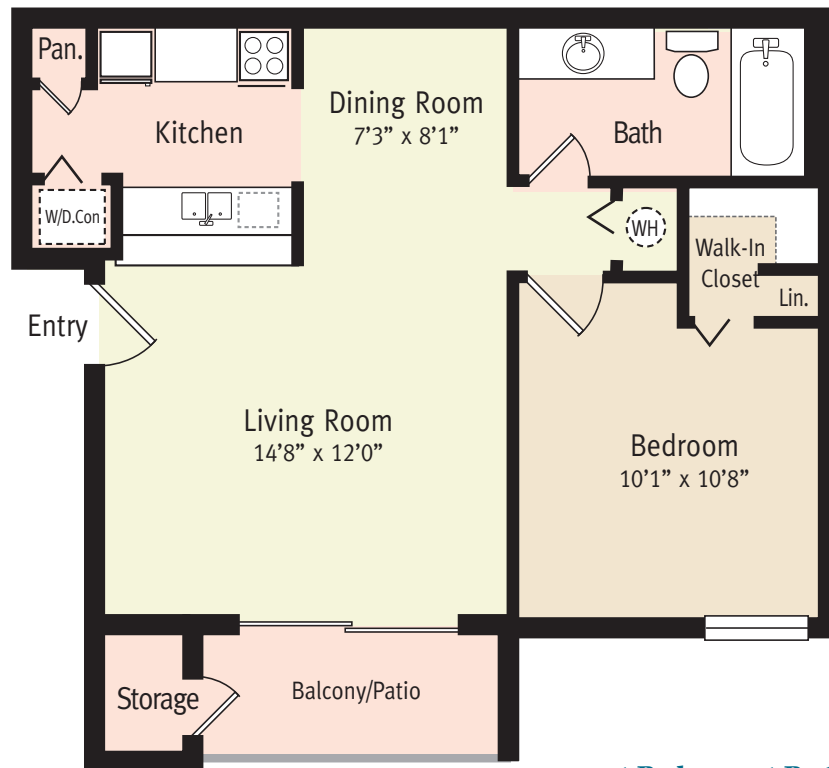
Phone: 813-989-0586 • Fax : 813-988-5581

fishermans@resimgt.com





THE MARLIN



**1 Bedroom, 1 Bath
600 Square Feet**

8900 Fisherman's Point Dr. • Temple Terrace, Florida 33637

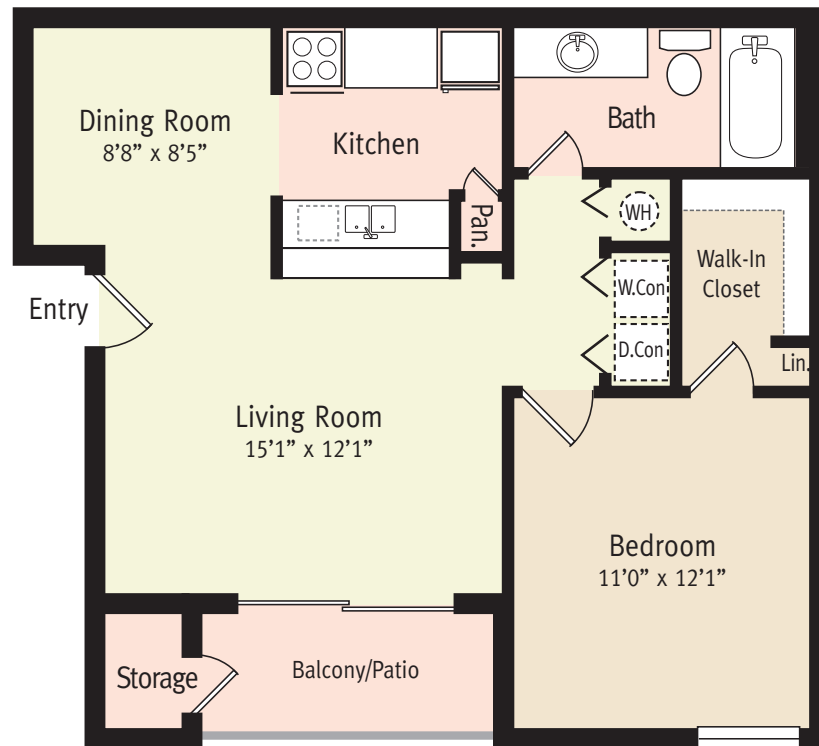
Phone: 813-989-0586 • Fax : 813-988-5581

fishermans@resimgt.com





THE DOLPHIN



**1 Bedroom, 1 Bath
700 Square Feet**

8900 Fisherman's Point Dr. • Temple Terrace, Florida 33637

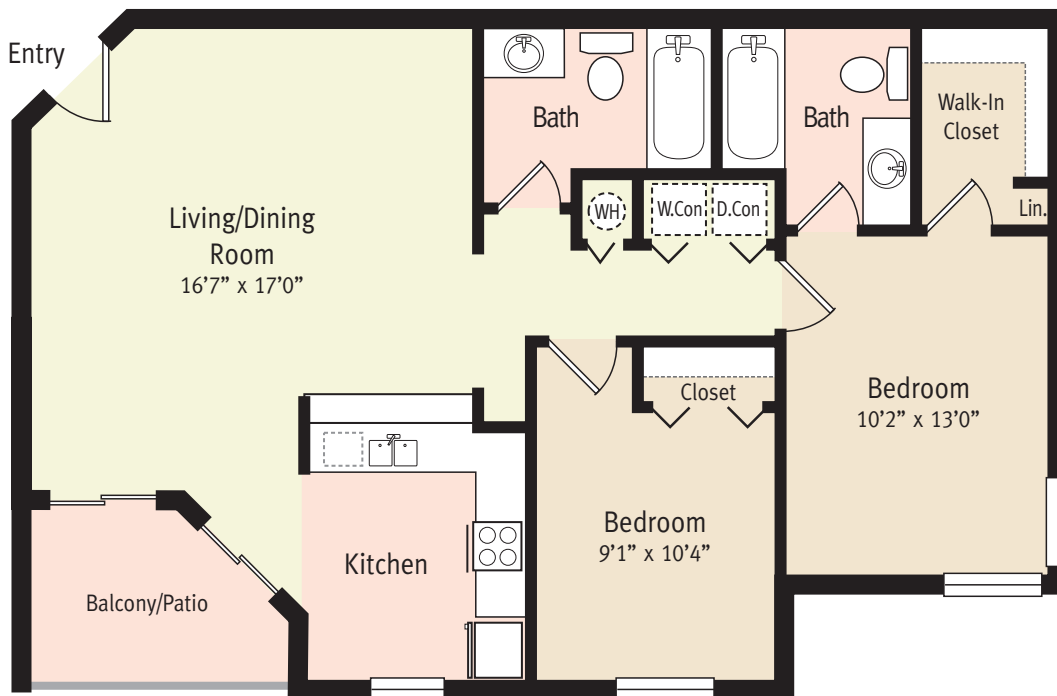
Phone: 813-989-0586 • Fax : 813-988-5581

fishermans@resimgt.com





THE DEVIL RAY



**2 Bedroom, 2 Bath
900 Square Feet**

8900 Fisherman's Point Dr. • Temple Terrace, Florida 33637

Phone: 813-989-0586 • Fax : 813-988-5581

fishermans@resimgt.com





THE JAGUAR



**2 Bedroom, 2 Bath
1,000 Square Feet**

8900 Fisherman's Point Dr. • Temple Terrace, Florida 33637

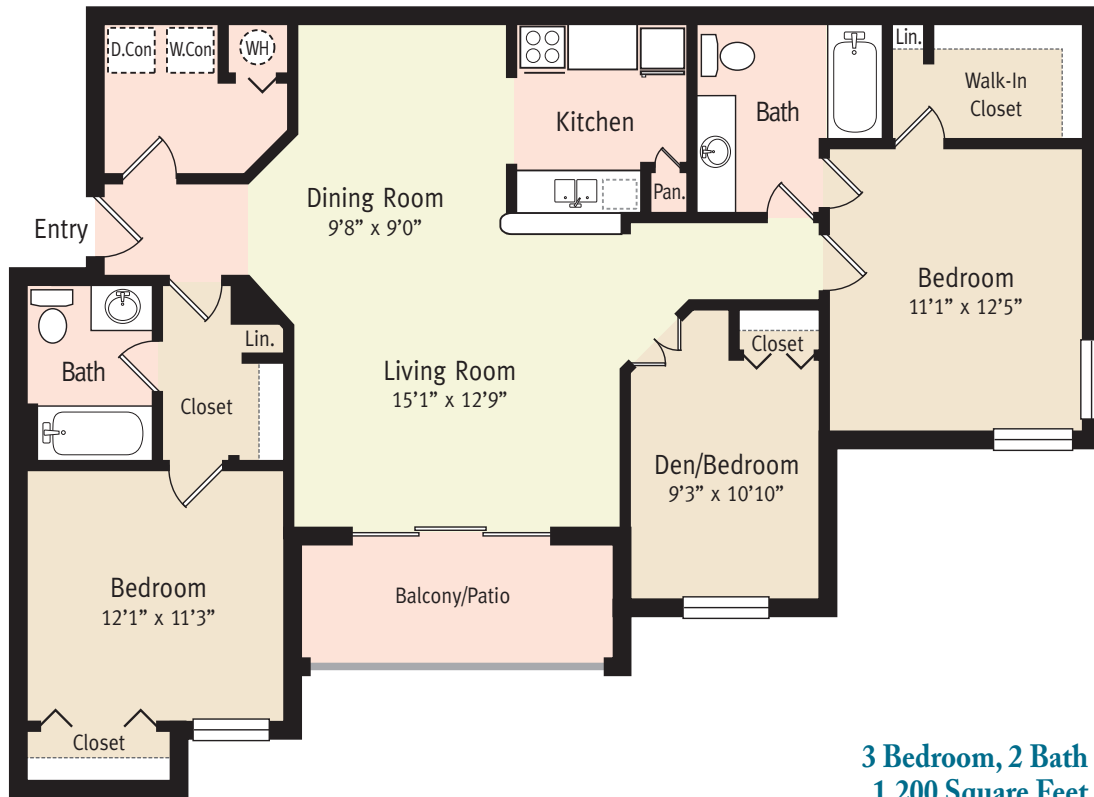
Phone: 813-989-0586 • Fax : 813-988-5581

fishermans@resimgt.com





THE BUCCANEER



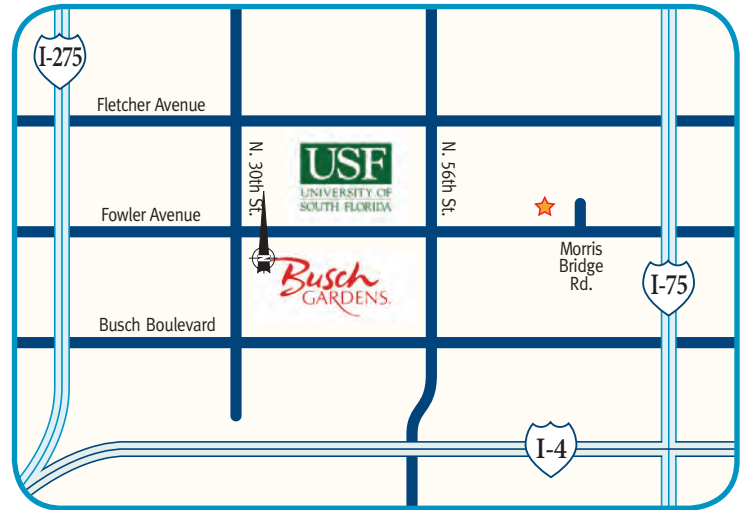
3 Bedroom, 2 Bath
1,200 Square Feet

8900 Fisherman's Point Dr. • Temple Terrace, Florida 33637

Phone: 813-989-0586 • Fax : 813-988-5581

fishermans@resimgt.com





Directions: From I-275, exit east on Fowler Avenue, travel past 56th Street (approximately 1.5 miles), turn left on Morris Bridge Road.

From I-75, exit west on Fowler Avenue and turn right on Morris Bridge Road.



8900 Fisherman's Point Dr. • Temple Terrace, Florida 33637

Phone: 813-989-0586 • Fax : 813-988-5581

fishermans@resimgt.com

